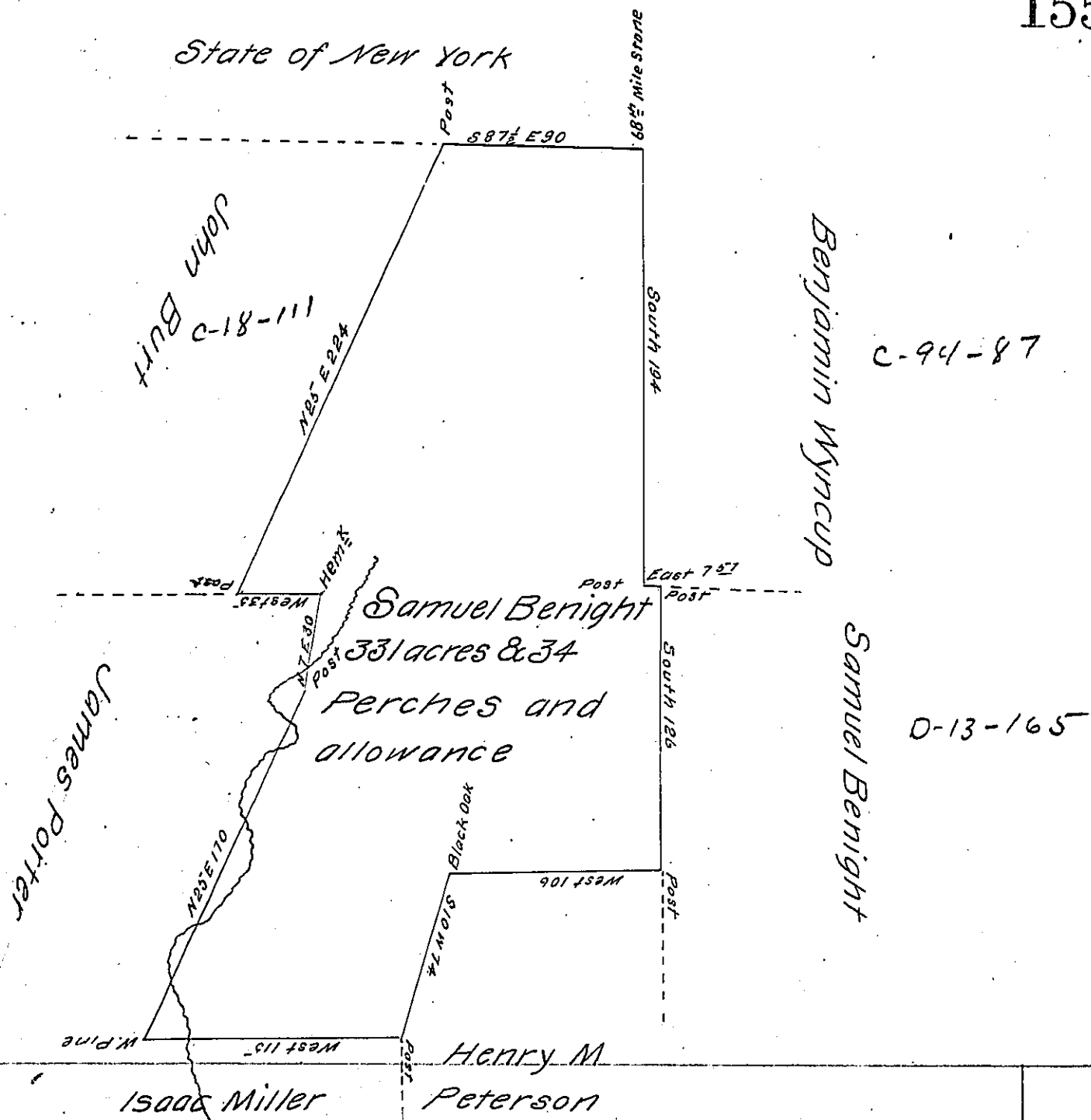


State of New York



A Draft of a tract of Land Containing three hundred and thirty one acres and thirty four perches and an allowance of six per Cent &c including an improvement of Samuel Benight with two dwelling Houses and a large framed Barn situate in the township of Ridgbury Bradford County and adjoining the State line of New York. Surveyed to Samuel Benight May 25<sup>th</sup> 1827 in pursuance of a Warrant dated April 5<sup>th</sup> 1825 by

Elip<sup>h</sup> Mason D.S.

Gabriel Heister Esquire  
Surveyor General

IN TESTIMONY that the above is a copy of the original remaining on file in the Department of Internal Affairs of Pennsylvania, made conformably to an Act of Assembly approved the 16th day of February, 1833, I have hereunto set my Hand and caused the Seal of said Department to be affixed at Harrisburg, this twenty third day of February 1904.

*Lea C. D. Pearson*  
Secretary of Internal Affairs.